

Plan to Accompany Disclosure Statement for a Strata Development of Air Space Parcel 1, Section 112, Esquimalt District, Air Space Plan _____.

(Formerly Part of Lot A, Plan EPP110139)



The intended plot size of this plan is 560 mm in width by 432 mm in height (C size) when plotted at a scale of 1:300

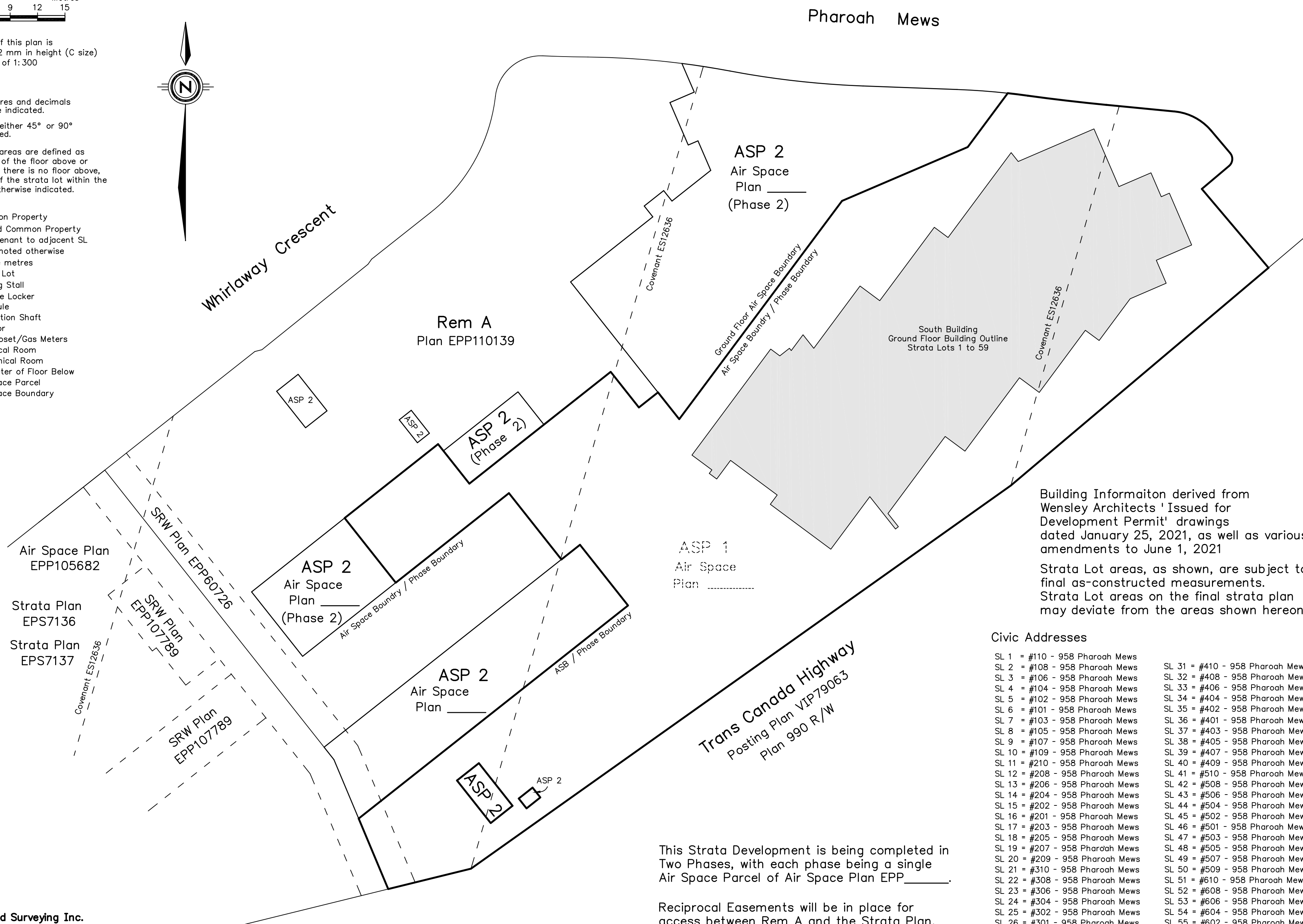
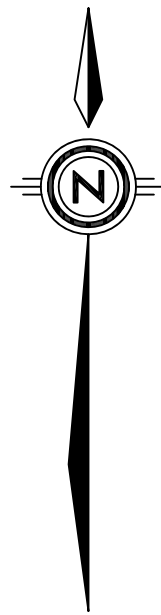
Legend:

All distances are in metres and decimals thereof unless otherwise indicated.

All building corners are either 45° or 90° unless otherwise indicated.

All strata lots and LCP areas are defined as to height by the centre of the floor above or its extensions, or where there is no floor above, by the average height of the strata lot within the same building, unless otherwise indicated.

- Pt Denotes Part
- CP Denotes Common Property
- LCP Denotes Limited Common Property appurtenant to adjacent SL if not noted otherwise
- m² Denotes Square metres
- SL Denotes Strata Lot
- Ⓟ Denotes Parking Stall
- Ⓢ Denotes Storage Locker
- Vest Denotes Vestibule
- Vent Denotes Ventilation Shaft
- Elev Denotes Elevator
- Gas Denotes Gas Closet/Gas Meters
- Elec Denotes Electrical Room
- Mech Denotes Mechanical Room
- PFB Denotes Perimeter of Floor Below
- ASP Denotes Air Space Parcel
- ASB Denotes Air Space Boundary



Building Information derived from Wensley Architects 'Issued for Development Permit' drawings dated January 25, 2021, as well as various amendments to June 1, 2021

Strata Lot areas, as shown, are subject to final as-constructed measurements. Strata Lot areas on the final strata plan may deviate from the areas shown hereon.

Civic Addresses

- | | |
|---------------------------------|---------------------------------|
| SL 1 = #110 - 958 Pharoah Mews | SL 31 = #410 - 958 Pharoah Mews |
| SL 2 = #108 - 958 Pharoah Mews | SL 32 = #408 - 958 Pharoah Mews |
| SL 3 = #106 - 958 Pharoah Mews | SL 33 = #406 - 958 Pharoah Mews |
| SL 4 = #104 - 958 Pharoah Mews | SL 34 = #404 - 958 Pharoah Mews |
| SL 5 = #102 - 958 Pharoah Mews | SL 35 = #402 - 958 Pharoah Mews |
| SL 6 = #101 - 958 Pharoah Mews | SL 36 = #401 - 958 Pharoah Mews |
| SL 7 = #103 - 958 Pharoah Mews | SL 37 = #403 - 958 Pharoah Mews |
| SL 8 = #105 - 958 Pharoah Mews | SL 38 = #405 - 958 Pharoah Mews |
| SL 9 = #107 - 958 Pharoah Mews | SL 39 = #407 - 958 Pharoah Mews |
| SL 10 = #109 - 958 Pharoah Mews | SL 40 = #409 - 958 Pharoah Mews |
| SL 11 = #210 - 958 Pharoah Mews | SL 41 = #510 - 958 Pharoah Mews |
| SL 12 = #208 - 958 Pharoah Mews | SL 42 = #508 - 958 Pharoah Mews |
| SL 13 = #206 - 958 Pharoah Mews | SL 43 = #506 - 958 Pharoah Mews |
| SL 14 = #204 - 958 Pharoah Mews | SL 44 = #504 - 958 Pharoah Mews |
| SL 15 = #202 - 958 Pharoah Mews | SL 45 = #502 - 958 Pharoah Mews |
| SL 16 = #201 - 958 Pharoah Mews | SL 46 = #501 - 958 Pharoah Mews |
| SL 17 = #203 - 958 Pharoah Mews | SL 47 = #503 - 958 Pharoah Mews |
| SL 18 = #205 - 958 Pharoah Mews | SL 48 = #505 - 958 Pharoah Mews |
| SL 19 = #207 - 958 Pharoah Mews | SL 49 = #507 - 958 Pharoah Mews |
| SL 20 = #209 - 958 Pharoah Mews | SL 50 = #509 - 958 Pharoah Mews |
| SL 21 = #310 - 958 Pharoah Mews | SL 51 = #610 - 958 Pharoah Mews |
| SL 22 = #308 - 958 Pharoah Mews | SL 52 = #608 - 958 Pharoah Mews |
| SL 23 = #306 - 958 Pharoah Mews | SL 53 = #606 - 958 Pharoah Mews |
| SL 24 = #304 - 958 Pharoah Mews | SL 54 = #604 - 958 Pharoah Mews |
| SL 25 = #302 - 958 Pharoah Mews | SL 55 = #602 - 958 Pharoah Mews |
| SL 26 = #301 - 958 Pharoah Mews | SL 56 = #603 - 958 Pharoah Mews |
| SL 27 = #303 - 958 Pharoah Mews | SL 57 = #605 - 958 Pharoah Mews |
| SL 28 = #305 - 958 Pharoah Mews | SL 58 = #607 - 958 Pharoah Mews |
| SL 29 = #307 - 958 Pharoah Mews | SL 59 = #609 - 958 Pharoah Mews |
| SL 30 = #309 - 958 Pharoah Mews | |

This Strata Development is being completed in Two Phases, with each phase being a single Air Space Parcel of Air Space Plan EPP_____.

Reciprocal Easements will be in place for access between Rem A and the Strata Plan.

June 2021

McIlvaney Riley Land Surveying Inc.

#113 - 2244 Sooke Road
Victoria, B.C. V9B 1X1
(250) 474-5538
www.mrls.ca

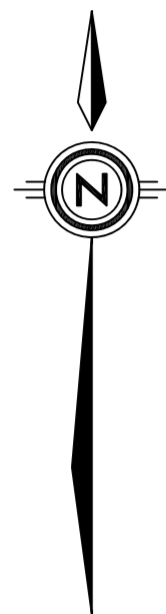
File: 6562PrelimSTRATA_Ph1

Parkade Level 2 - Common Property



Scale of this sheet is 1:300 at intended plot size of plan

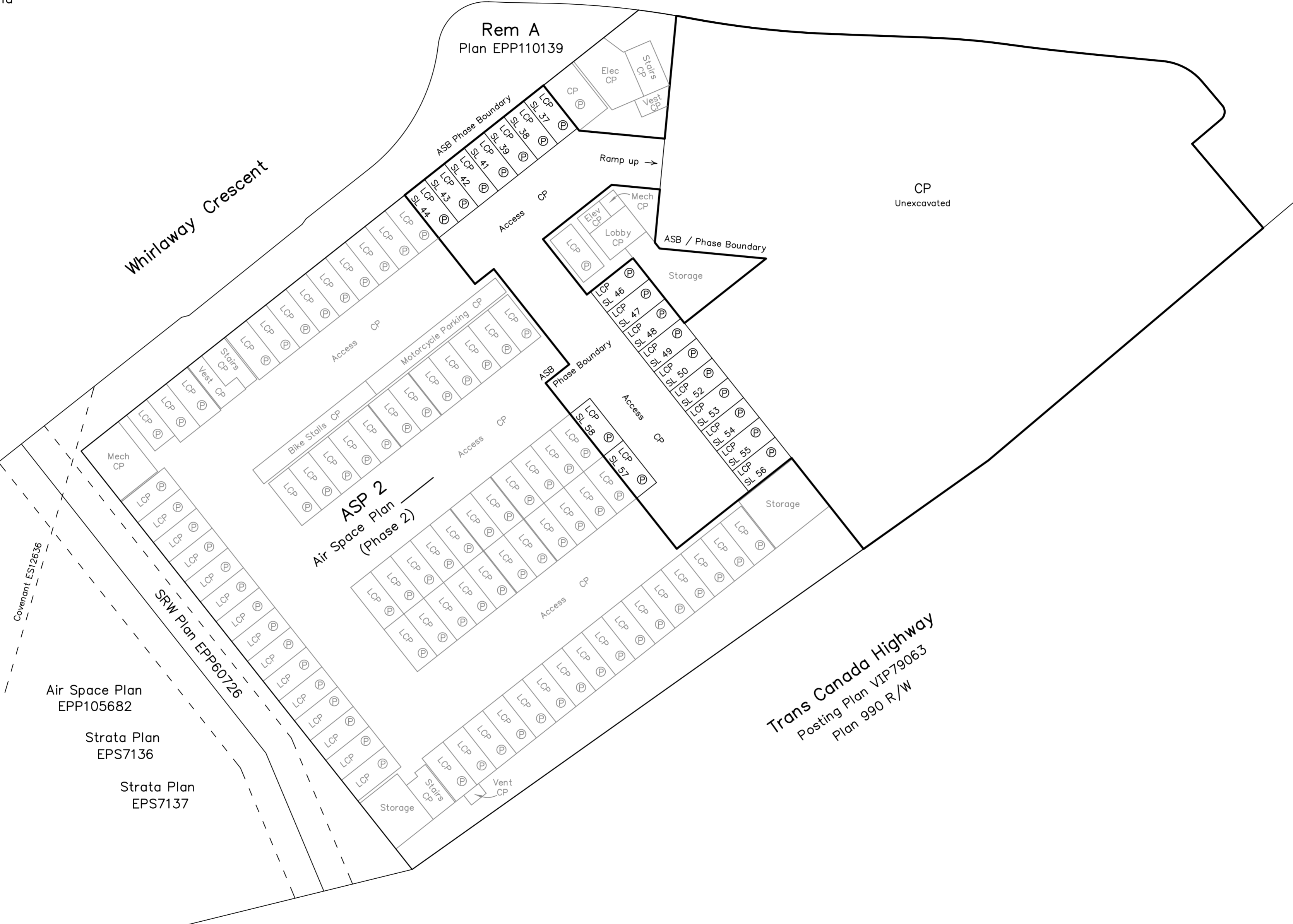
See Sheet 1 for Legend



Whirlaway Crescent

Pharoah Mews

Rem A
Plan EPP110139



Covenant ES12636

Air Space Plan
EPP105682

Strata Plan
EPS7136

Strata Plan
EPS7137

SRW Plan EPP60726

ASP 2
Air Space Plan
(Phase 2)

Trans Canada Highway
Posting Plan VIP79063
Plan 990 R/W

June 2021

McIlvaney Riley Land Surveying Inc.

#113 - 2244 Sooke Road
Victoria, B.C. V9B 1X1
(250) 474-5538
www.mrls.ca

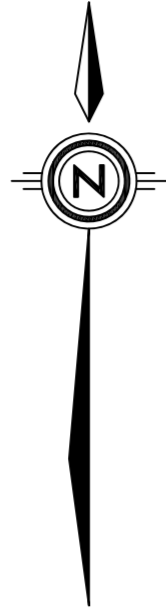
File: 6562PrelimSTRATA_Ph1

Parkade Level 1 - Common Property

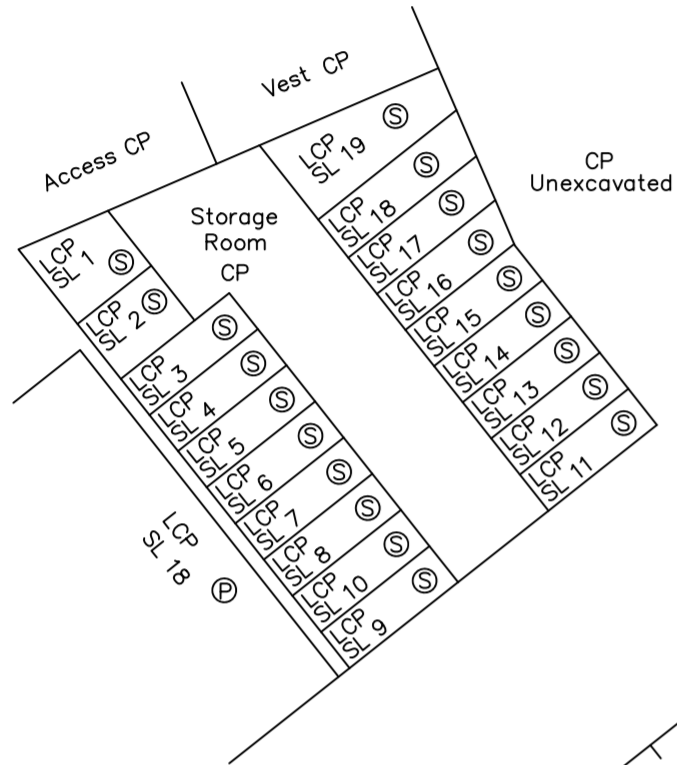


Scale of this sheet is 1:300 at intended plot size of plan

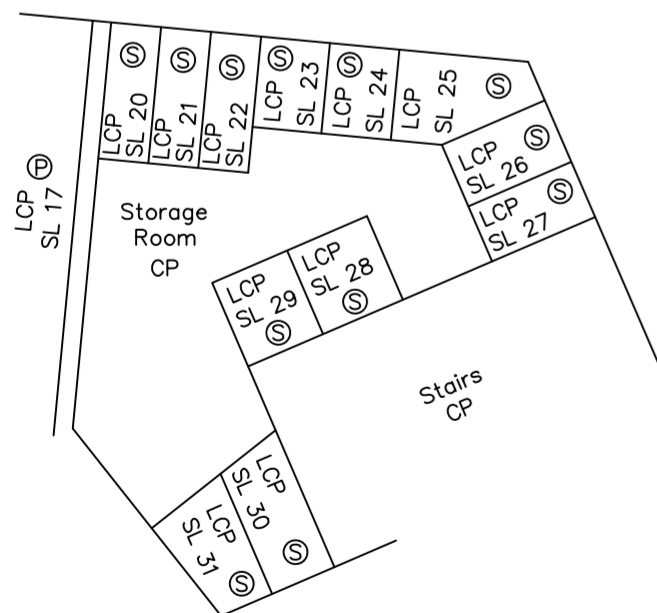
See Sheet 1 for Legend



Detail 1
Not to Scale



Detail 2
Not to Scale

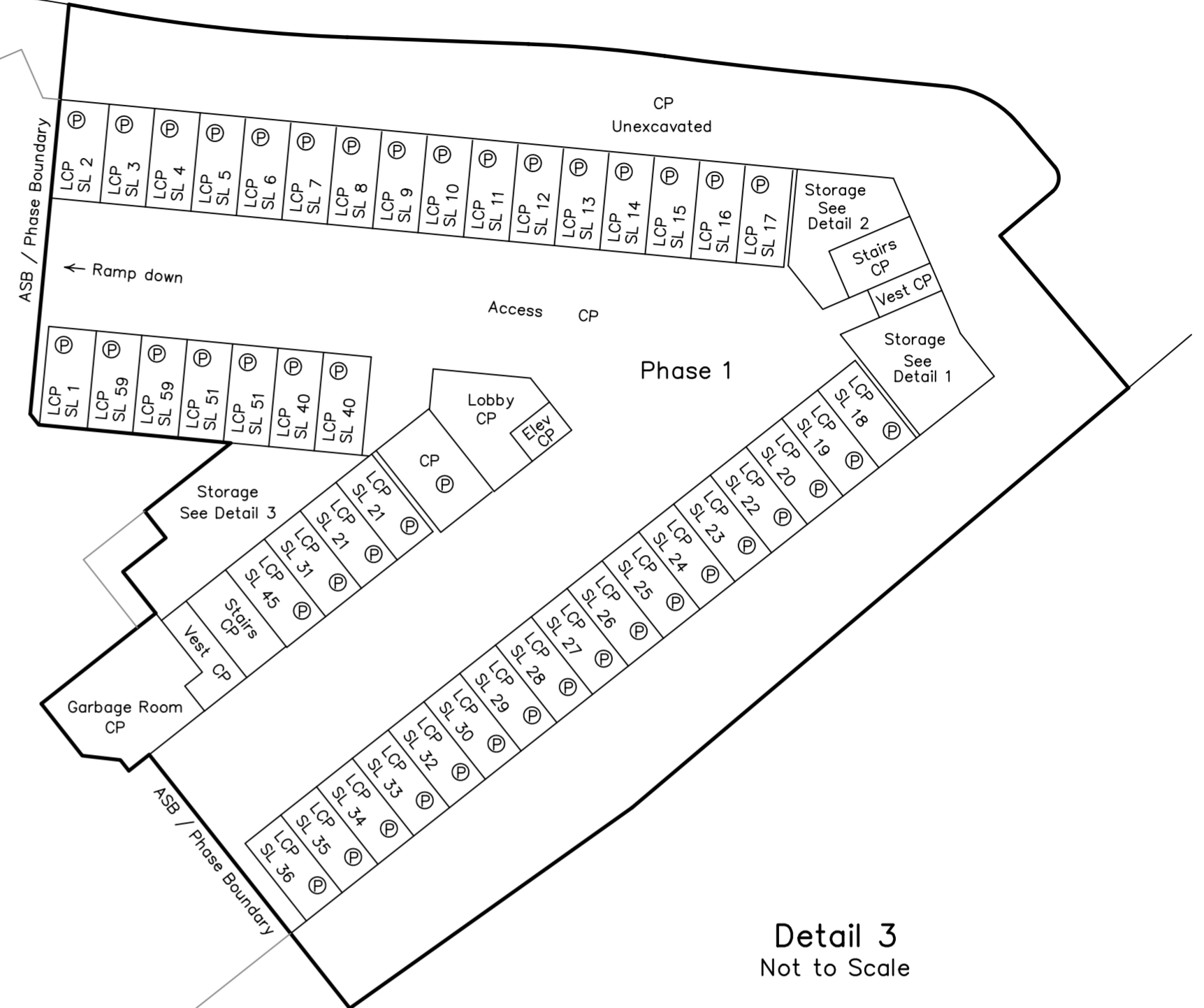


Whirlaway Crescent

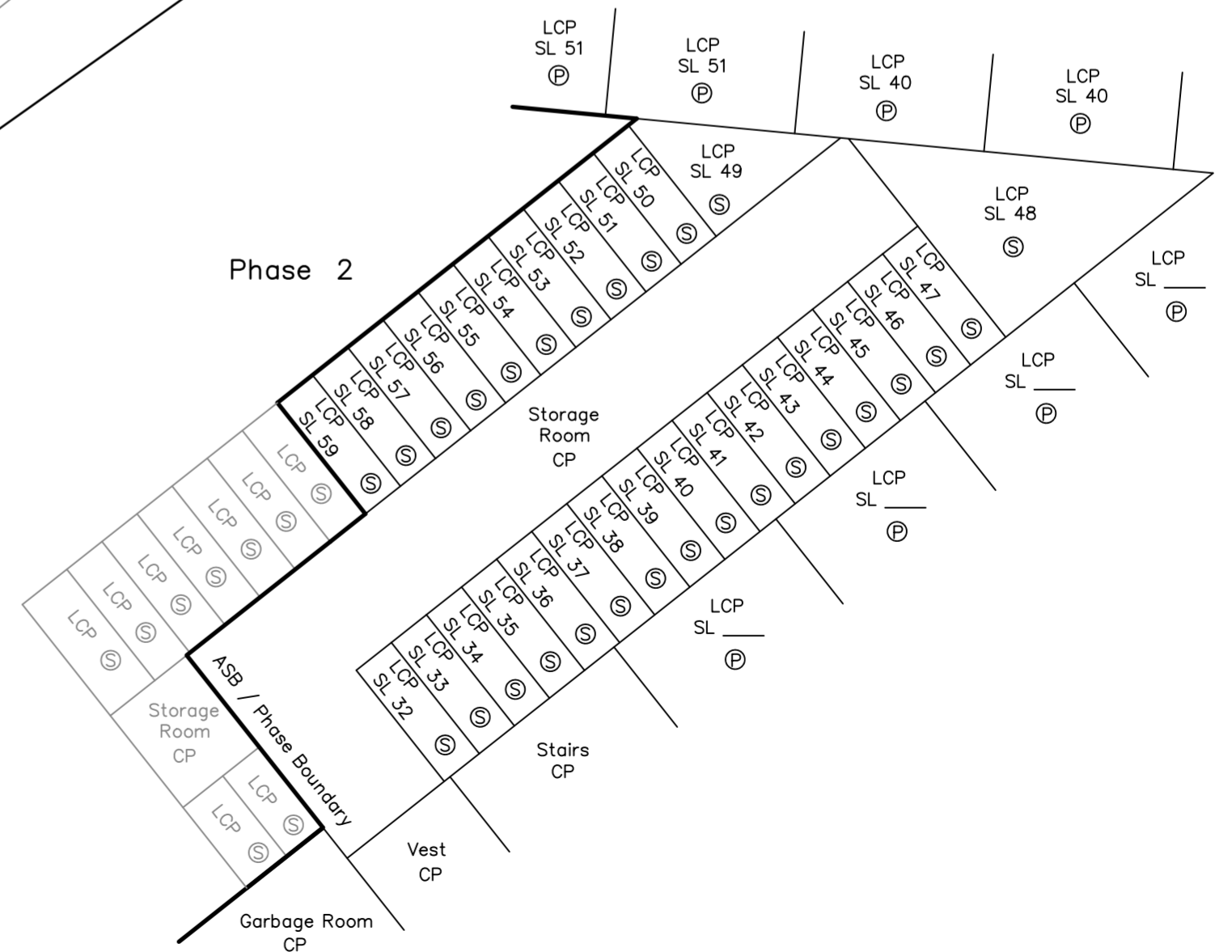
Rem A
Plan EPP110139

Pharoah Mews

ASP 2
Air Space Plan
(Phase 2)
Open to Below



Detail 3
Not to Scale



Air Space Plan
EPP105682

Strata Plan
EPS7136

Strata Plan
EPS7137

Trans Canada Highway
Posting Plan VIP79063
Plan 990 R/W

June 2021

McIlvane Riley Land Surveying Inc.

#113 - 2244 Sooke Road
Victoria, B.C. V9B 1X1
(250) 474-5538
www.mrls.ca

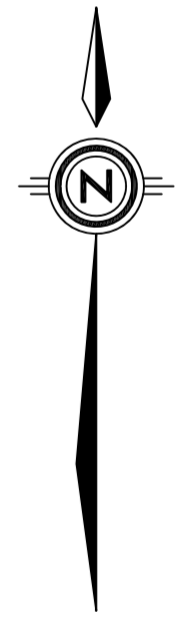
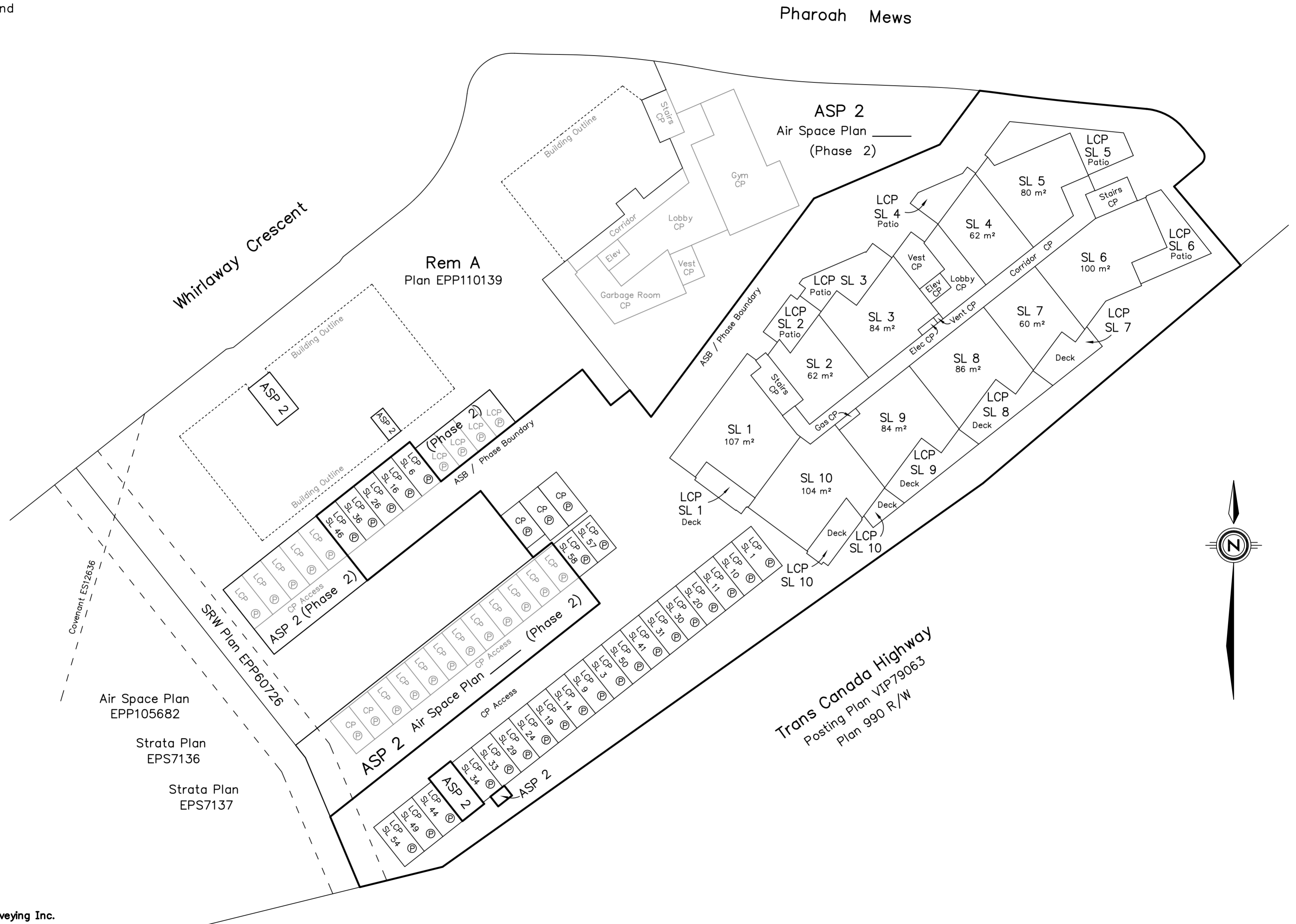
File: 6562PrelimSTRATA_Ph1

Main Floor - Strata Lots 1 to 10 and Common Property Areas



Scale of this sheet is 1:300 at intended plot size of plan

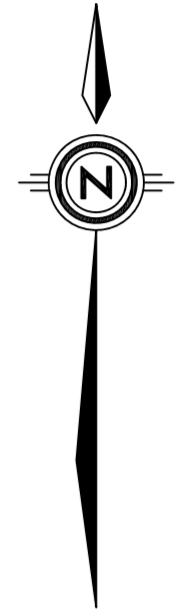
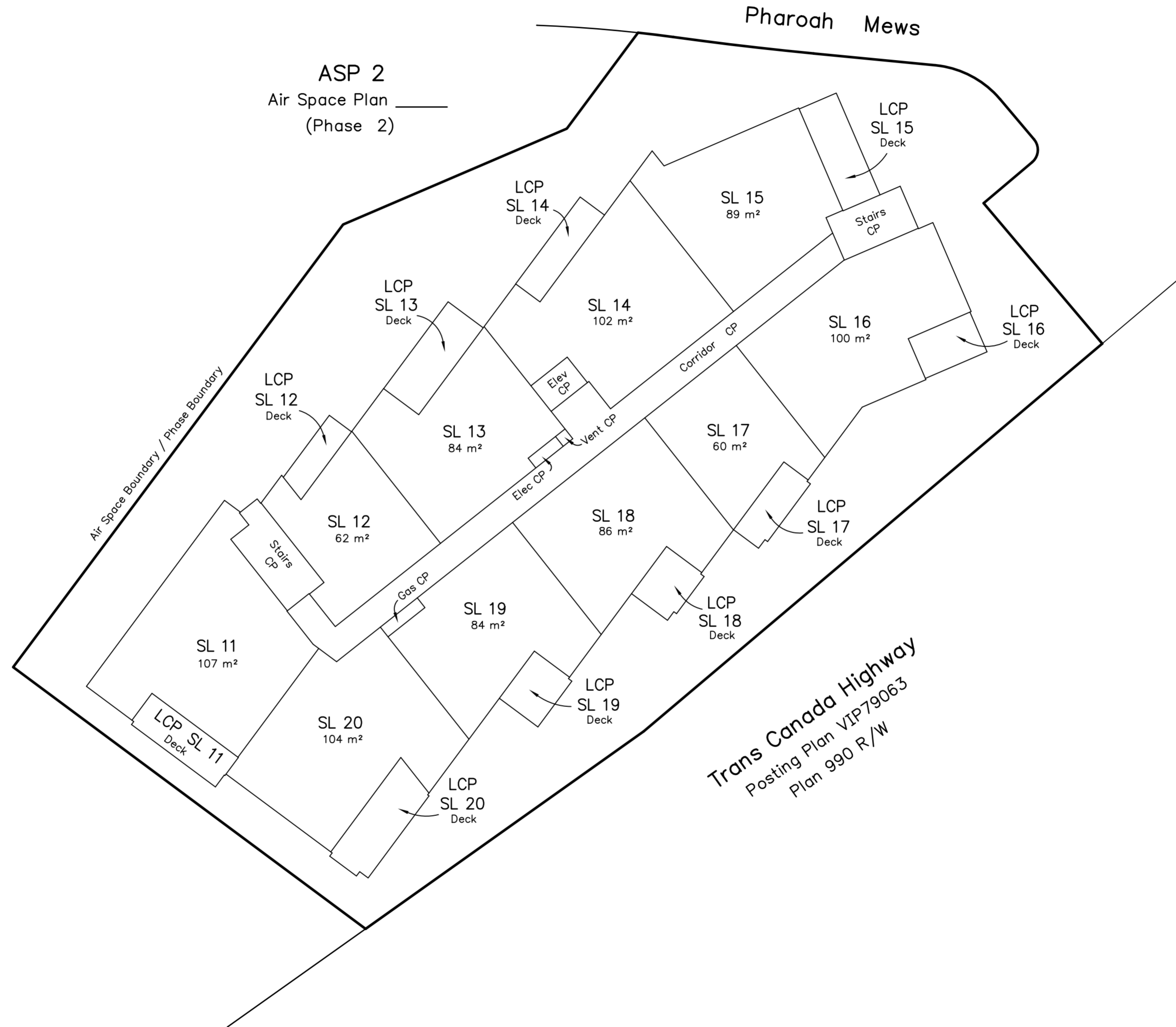
See Sheet 1 for Legend



Second Floor - Strata Lots 11 to 20



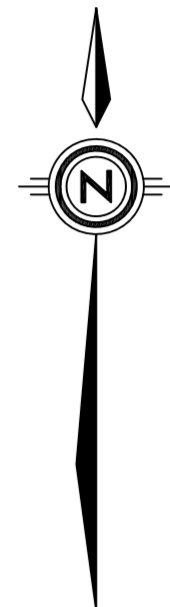
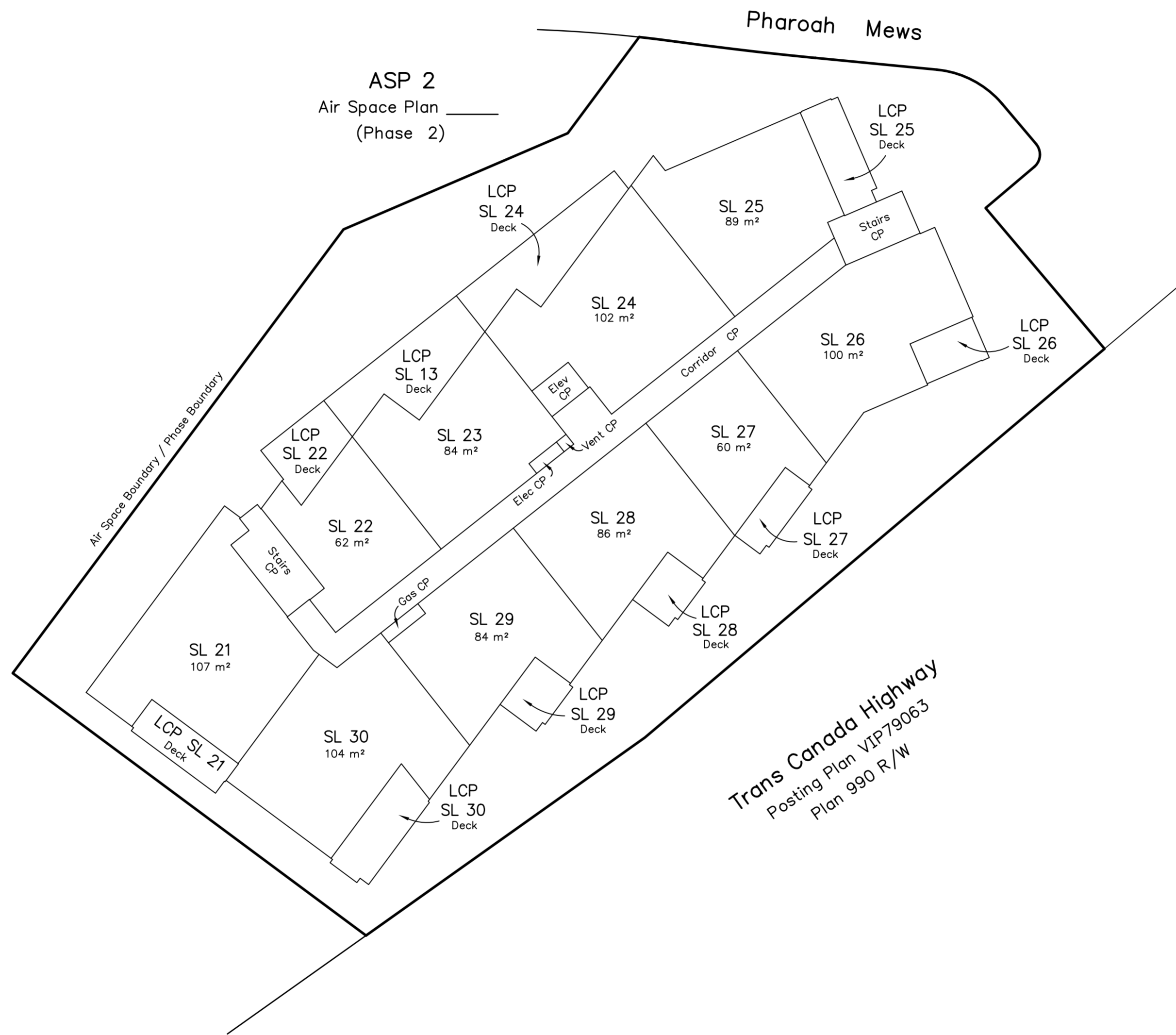
Scale of this sheet is 1:200 at intended plot size of plan
See Sheet 1 for Legend



Third Floor - Strata Lots 21 to 30



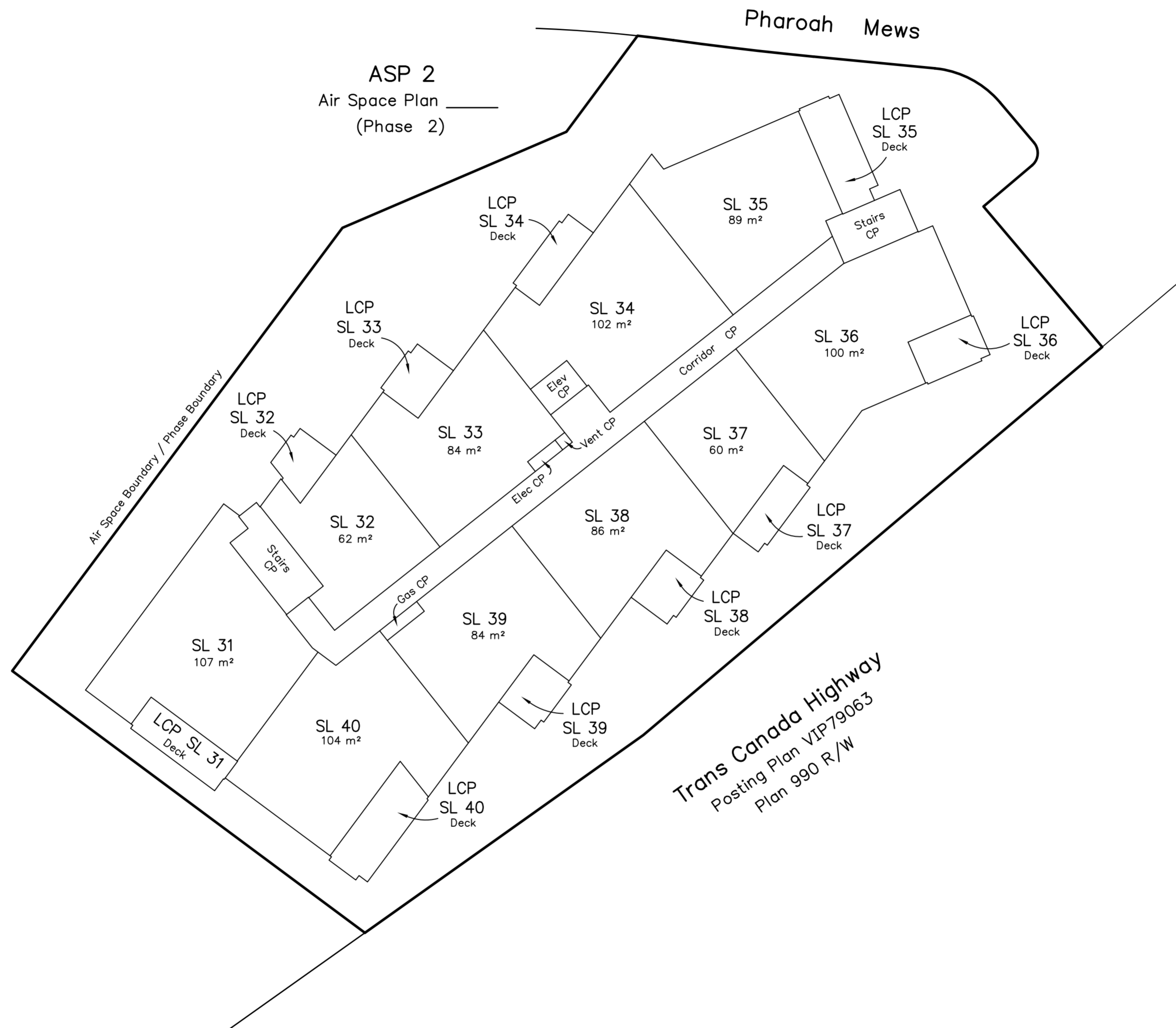
Scale of this sheet is 1:200 at intended plot size of plan
See Sheet 1 for Legend



Fourth Floor - Strata Lots 31 to 40



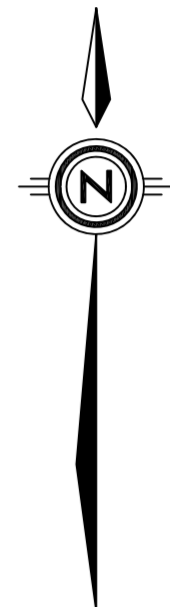
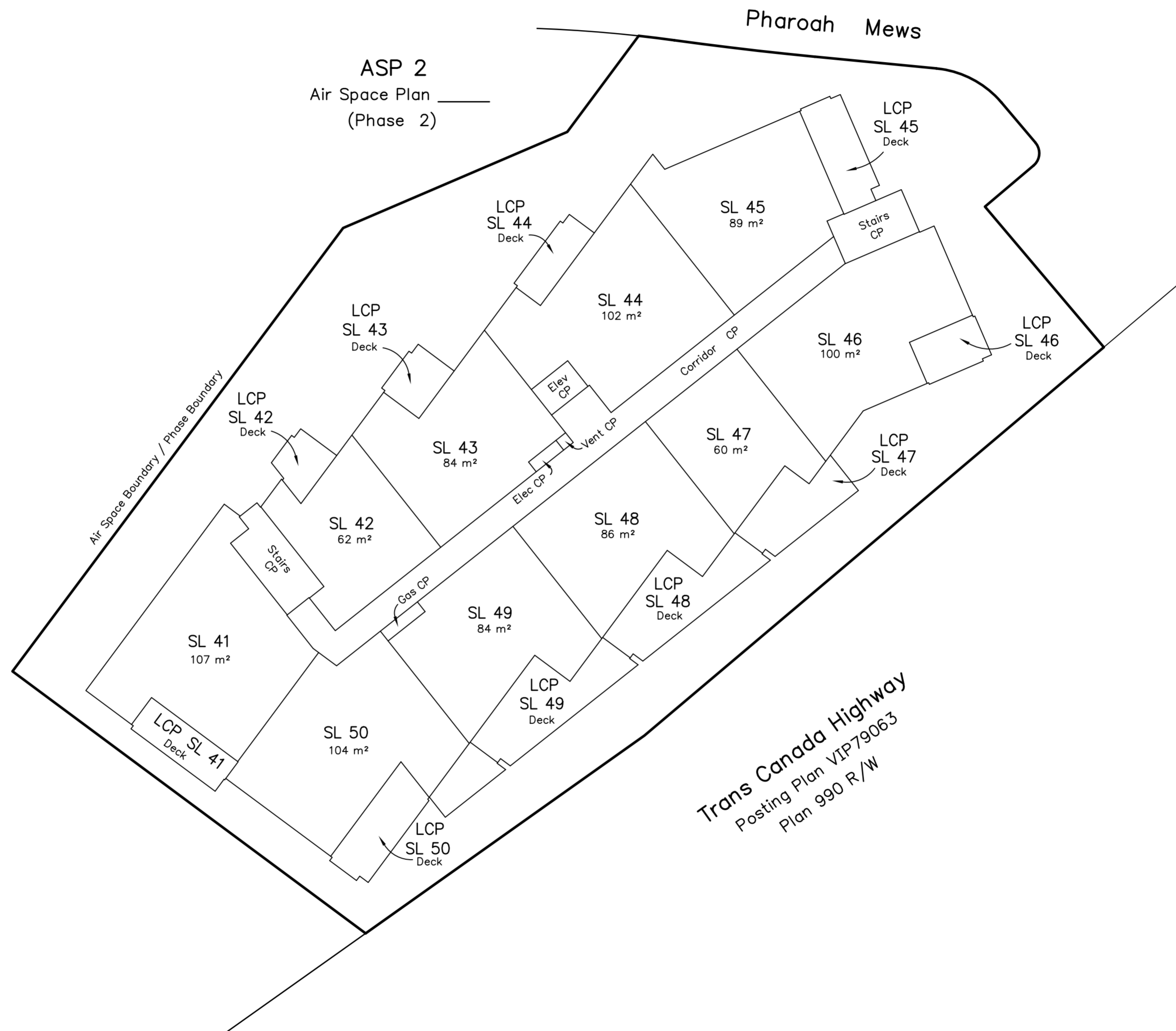
Scale of this sheet is 1:200 at intended plot size of plan
See Sheet 1 for Legend



Fifth Floor - Strata Lots 41 to 50



Scale of this sheet is 1:200 at intended plot size of plan
See Sheet 1 for Legend



Sixth Floor - Strata Lots 51 to 59



Scale of this sheet is 1:200 at intended plot size of plan
See Sheet 1 for Legend

