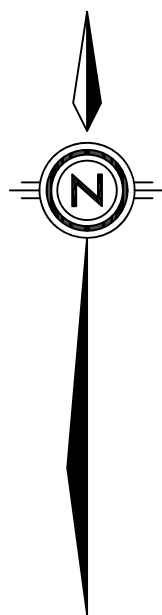


# Plan to Accompany Disclosure Statement for a Strata Development of Air Space Parcel 1, Section 112, Esquimalt District, Air Space Plan \_\_\_\_\_.

(Formerly Part of Lot A, Plan EPP110139)



The intended plot size of this plan is 560 mm in width by 432 mm in height (C size) when plotted at a scale of 1:300

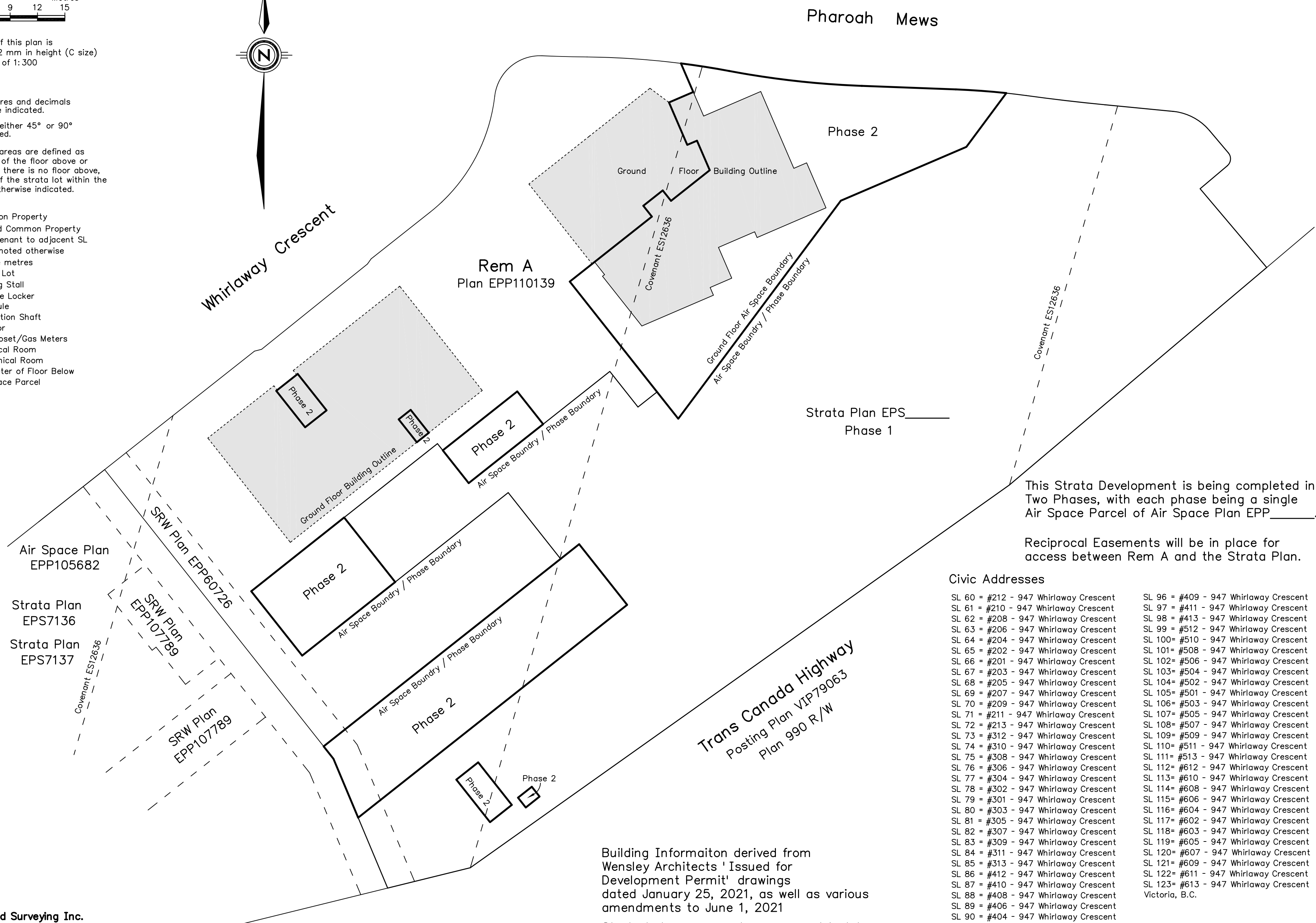
**Legend:**

All distances are in metres and decimals thereof unless otherwise indicated.

All building corners are either 45° or 90° unless otherwise indicated.

All strata lots and LCP areas are defined as to height by the centre of the floor above or its extensions, or where there is no floor above, by the average height of the strata lot within the same building, unless otherwise indicated.

- Pt Denotes Part
- CP Denotes Common Property
- LCP Denotes Limited Common Property appurtenant to adjacent SL if not noted otherwise
- m<sup>2</sup> Denotes Square metres
- SL Denotes Strata Lot
- Ⓟ Denotes Parking Stall
- Ⓢ Denotes Storage Locker
- Vest Denotes Vestibule
- Vent Denotes Ventilation Shaft
- Elev Denotes Elevator
- Gas Denotes Gas Closet/Gas Meters
- Elec Denotes Electrical Room
- Mech Denotes Mechanical Room
- PFB Denotes Perimeter of Floor Below
- ASP Denotes Air Space Parcel



This Strata Development is being completed in Two Phases, with each phase being a single Air Space Parcel of Air Space Plan EPP\_\_\_\_\_.

Reciprocal Easements will be in place for access between Rem A and the Strata Plan.

**Civic Addresses**

- SL 60 = #212 - 947 Whirlaway Crescent
- SL 61 = #210 - 947 Whirlaway Crescent
- SL 62 = #208 - 947 Whirlaway Crescent
- SL 63 = #206 - 947 Whirlaway Crescent
- SL 64 = #204 - 947 Whirlaway Crescent
- SL 65 = #202 - 947 Whirlaway Crescent
- SL 66 = #201 - 947 Whirlaway Crescent
- SL 67 = #203 - 947 Whirlaway Crescent
- SL 68 = #205 - 947 Whirlaway Crescent
- SL 69 = #207 - 947 Whirlaway Crescent
- SL 70 = #209 - 947 Whirlaway Crescent
- SL 71 = #211 - 947 Whirlaway Crescent
- SL 72 = #213 - 947 Whirlaway Crescent
- SL 73 = #312 - 947 Whirlaway Crescent
- SL 74 = #310 - 947 Whirlaway Crescent
- SL 75 = #308 - 947 Whirlaway Crescent
- SL 76 = #306 - 947 Whirlaway Crescent
- SL 77 = #304 - 947 Whirlaway Crescent
- SL 78 = #302 - 947 Whirlaway Crescent
- SL 79 = #301 - 947 Whirlaway Crescent
- SL 80 = #303 - 947 Whirlaway Crescent
- SL 81 = #305 - 947 Whirlaway Crescent
- SL 82 = #307 - 947 Whirlaway Crescent
- SL 83 = #309 - 947 Whirlaway Crescent
- SL 84 = #311 - 947 Whirlaway Crescent
- SL 85 = #313 - 947 Whirlaway Crescent
- SL 86 = #412 - 947 Whirlaway Crescent
- SL 87 = #410 - 947 Whirlaway Crescent
- SL 88 = #408 - 947 Whirlaway Crescent
- SL 89 = #406 - 947 Whirlaway Crescent
- SL 90 = #404 - 947 Whirlaway Crescent
- SL 91 = #402 - 947 Whirlaway Crescent
- SL 92 = #401 - 947 Whirlaway Crescent
- SL 93 = #403 - 947 Whirlaway Crescent
- SL 94 = #405 - 947 Whirlaway Crescent
- SL 95 = #407 - 947 Whirlaway Crescent
- SL 96 = #409 - 947 Whirlaway Crescent
- SL 97 = #411 - 947 Whirlaway Crescent
- SL 98 = #413 - 947 Whirlaway Crescent
- SL 99 = #512 - 947 Whirlaway Crescent
- SL 100 = #510 - 947 Whirlaway Crescent
- SL 101 = #508 - 947 Whirlaway Crescent
- SL 102 = #506 - 947 Whirlaway Crescent
- SL 103 = #504 - 947 Whirlaway Crescent
- SL 104 = #502 - 947 Whirlaway Crescent
- SL 105 = #501 - 947 Whirlaway Crescent
- SL 106 = #503 - 947 Whirlaway Crescent
- SL 107 = #505 - 947 Whirlaway Crescent
- SL 108 = #507 - 947 Whirlaway Crescent
- SL 109 = #509 - 947 Whirlaway Crescent
- SL 110 = #511 - 947 Whirlaway Crescent
- SL 111 = #513 - 947 Whirlaway Crescent
- SL 112 = #612 - 947 Whirlaway Crescent
- SL 113 = #610 - 947 Whirlaway Crescent
- SL 114 = #608 - 947 Whirlaway Crescent
- SL 115 = #606 - 947 Whirlaway Crescent
- SL 116 = #604 - 947 Whirlaway Crescent
- SL 117 = #602 - 947 Whirlaway Crescent
- SL 118 = #603 - 947 Whirlaway Crescent
- SL 119 = #605 - 947 Whirlaway Crescent
- SL 120 = #607 - 947 Whirlaway Crescent
- SL 121 = #609 - 947 Whirlaway Crescent
- SL 122 = #611 - 947 Whirlaway Crescent
- SL 123 = #613 - 947 Whirlaway Crescent

Building Information derived from Wensley Architects 'Issued for Development Permit' drawings dated January 25, 2021, as well as various amendments to June 1, 2021

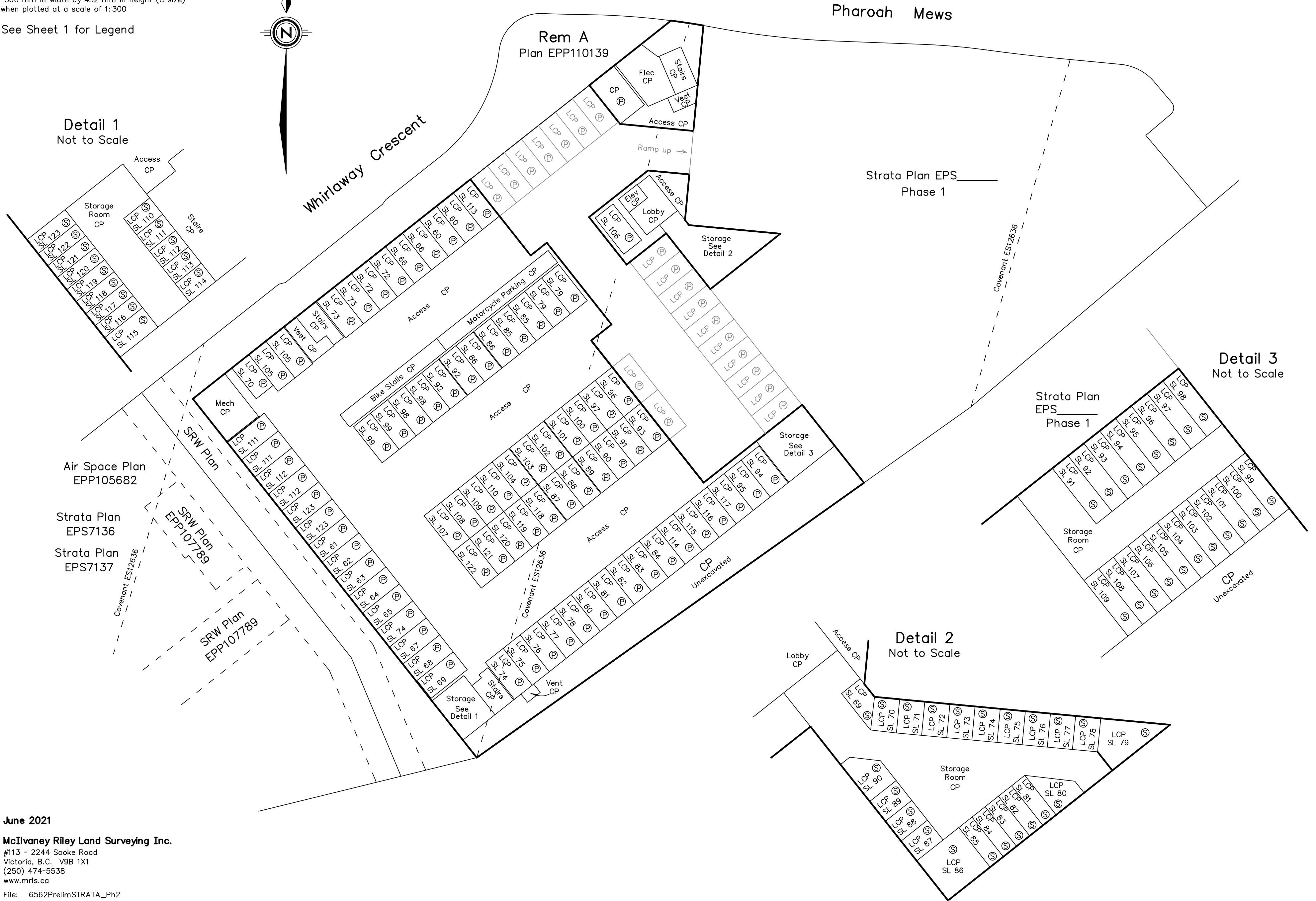
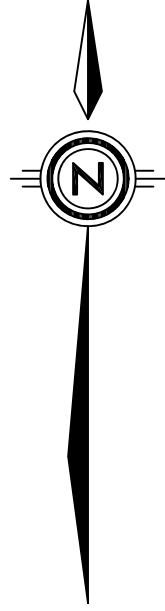
Strata Lot areas, as shown, are subject to final as-constructed measurements. Strata Lot areas on the final strata plan may deviate from the areas shown hereon.

# Parkade Level 2 - Common Property



The intended plot size of this plan is 560 mm in width by 432 mm in height (C size) when plotted at a scale of 1:300

See Sheet 1 for Legend



**Detail 1**  
Not to Scale

**Detail 3**  
Not to Scale

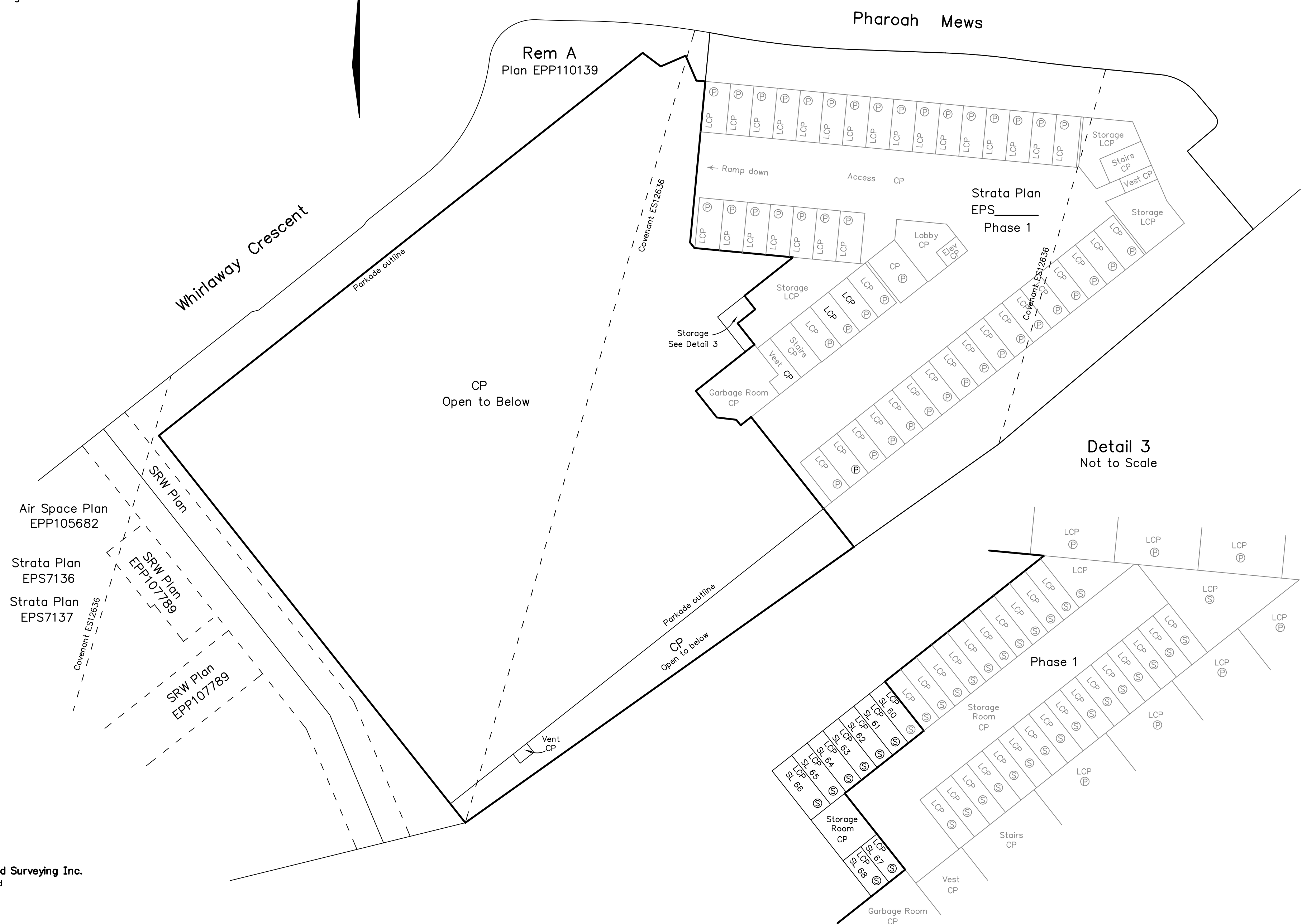
**Detail 2**  
Not to Scale

# Parkade Level 1 - Common Property



The intended plot size of this plan is 560 mm in width by 432 mm in height (C size) when plotted at a scale of 1:300

See Sheet 1 for Legend

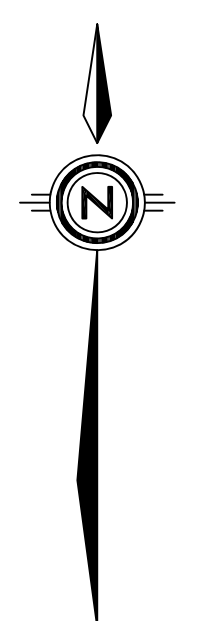
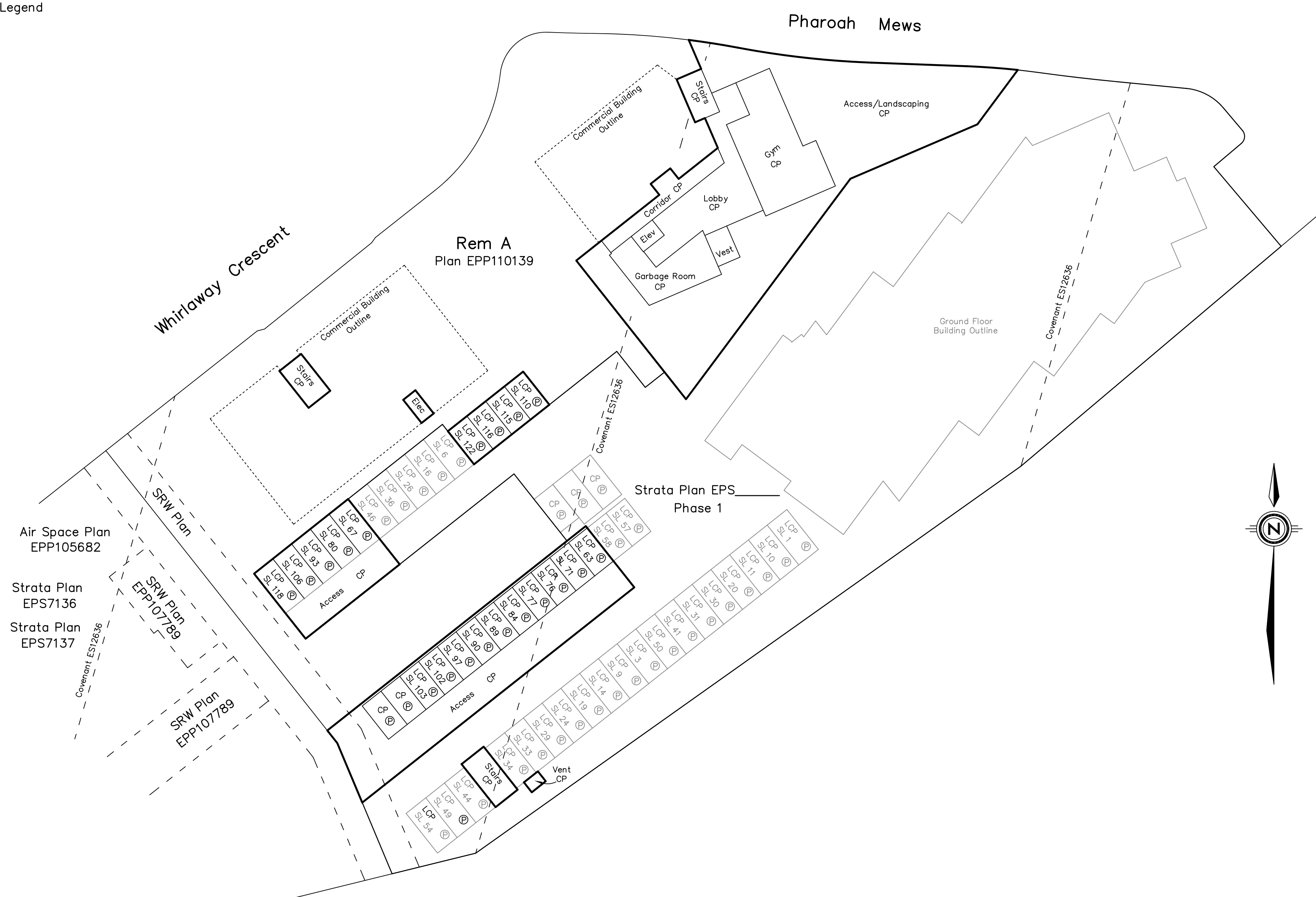


# Ground Floor - Strata Lots 1 to 10 and Common Property Areas



The intended plot size of this plan is 560 mm in width by 432 mm in height (C size) when plotted at a scale of 1:300

See Sheet 1 for Legend

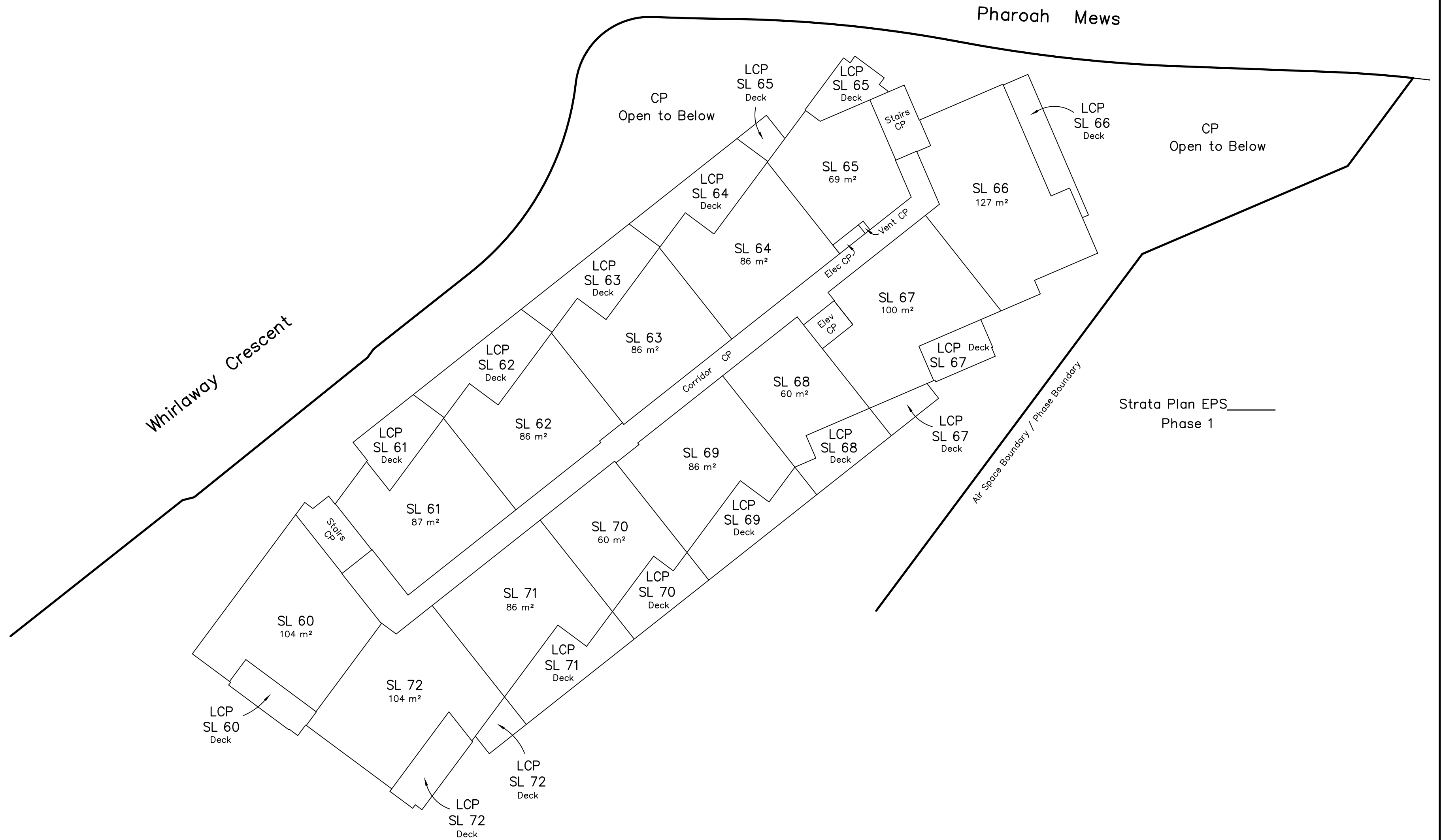
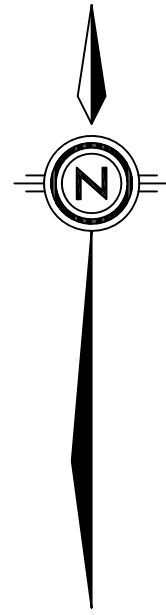


# Second Floor - Strata Lots 60 to 72



Scale of this sheet is 1:200 at intended plot size of plan

See Sheet 1 for Legend



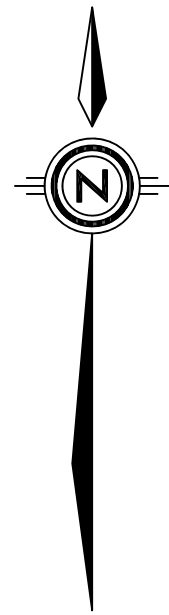
Strata Plan EPS  
Phase 1

# Third Floor - Strata Lots 73 to 85



Scale of this sheet is 1:200 at intended plot size of plan

See Sheet 1 for Legend

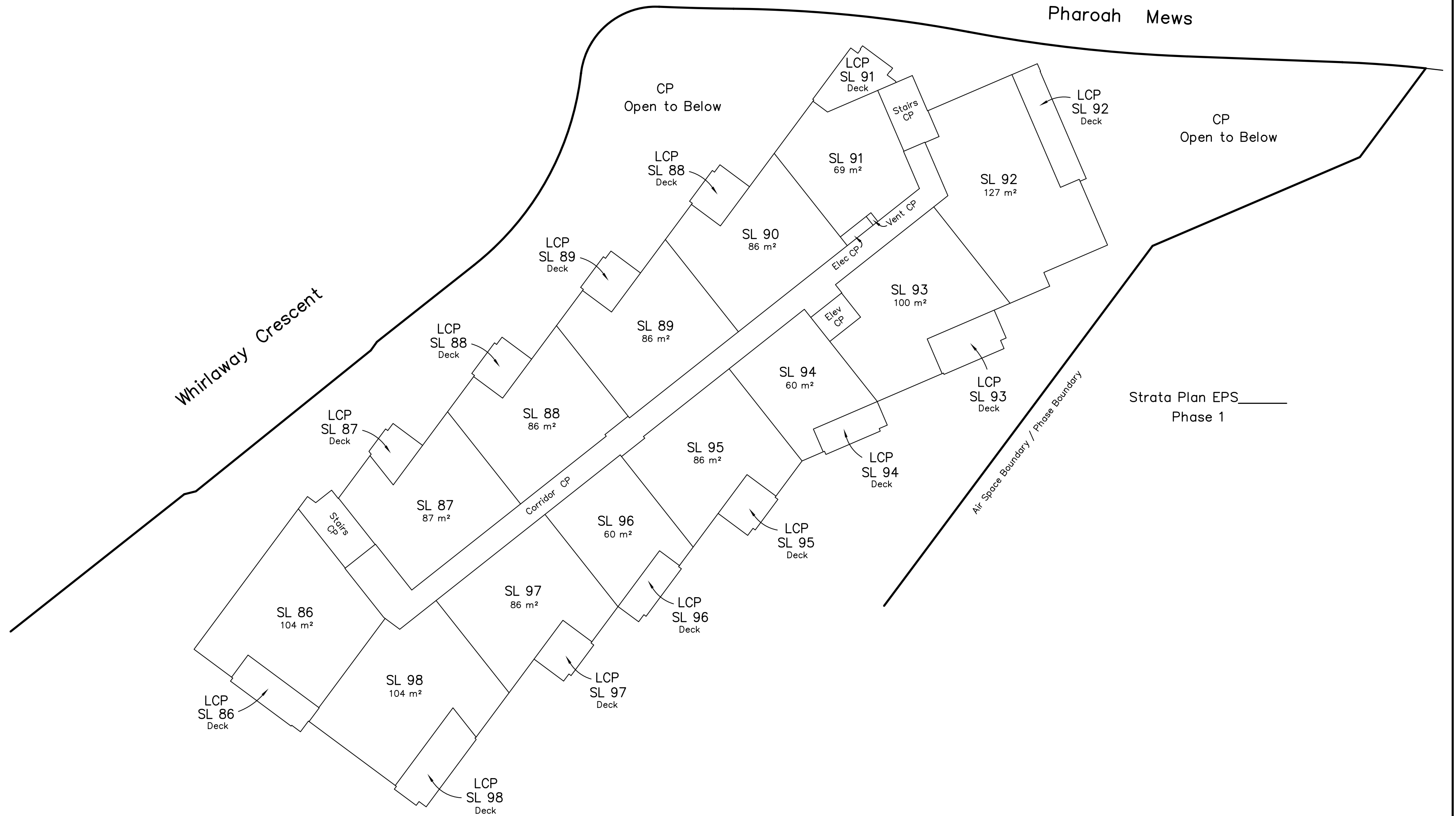
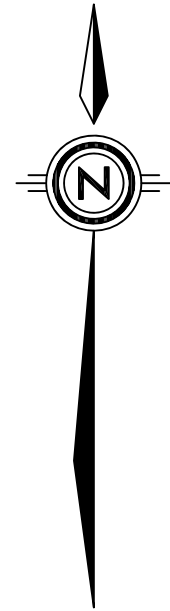


# Fourth Floor - Strata Lots 86 to 98



Scale of this sheet is 1:200 at intended plot size of plan

See Sheet 1 for Legend



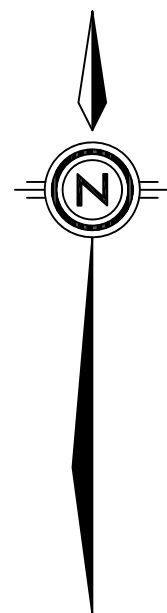
Strata Plan EPS  
Phase 1

# Fifth Floor - Strata Lots 99 to 111



Scale of this sheet is 1:200 at intended plot size of plan

See Sheet 1 for Legend



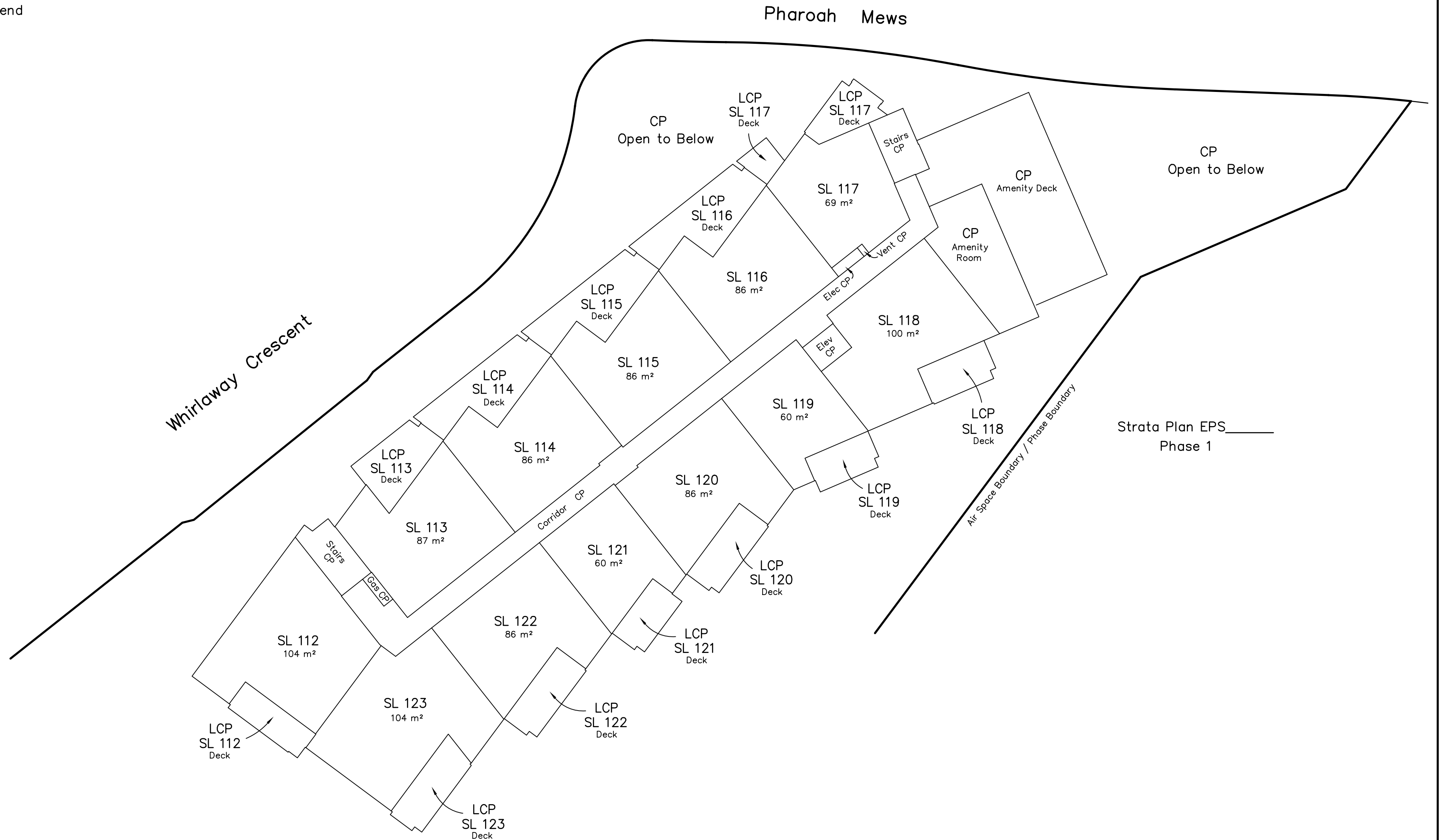
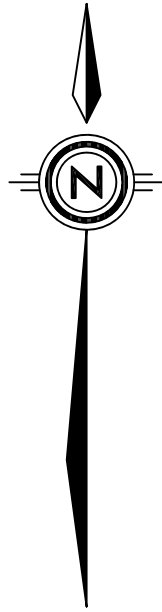


# Sixth Floor - Strata Lots 112 to 123



Scale of this sheet is 1:200 at intended plot size of plan

See Sheet 1 for Legend



Strata Plan EPS  
Phase 1